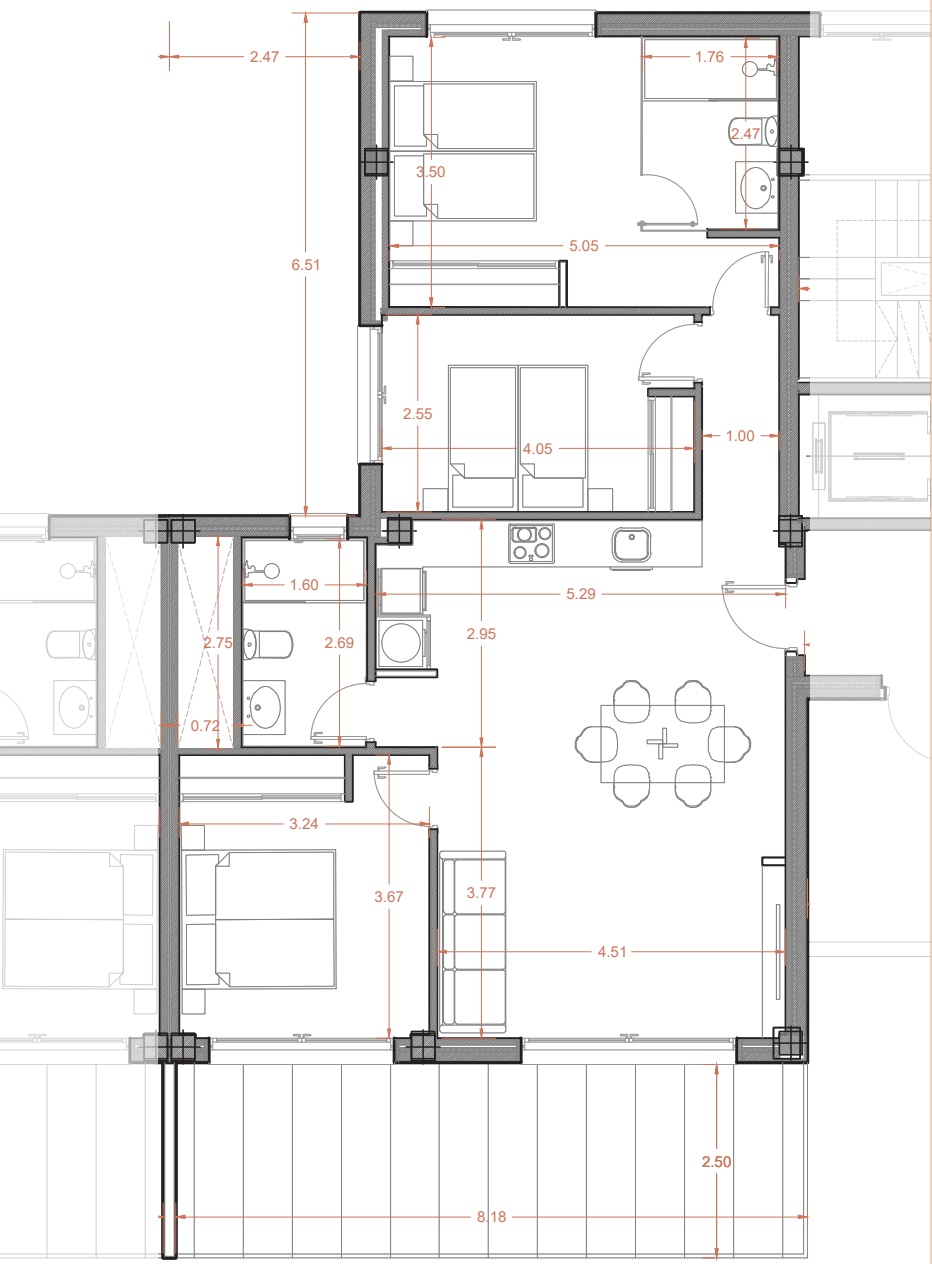


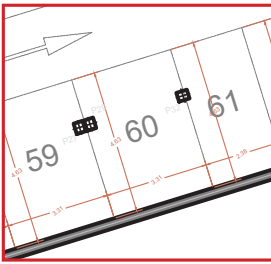
# HOUSE N.60 (TYPE E) 1ST FLOOR - BLOCK 3



1ST FLOOR TYPE E



1 X BASEMENT PARKING



THE IMAGES REFER TO APPROXIMATE SOLUTIONS AND ARE NOT BINDING WITH THE FINAL PROJECT

BUILT SURFACE	111,40 M2
LIVING ROOM KITCHEN	31,50 M2
BEDROOM 1	13,00 M2
BEDROOM 2	11,70 M2
BEDROOM 3	10,30 M2
BATHROOM 1	4,30 M2
BATHROOM 2	4,30 M2
CORRIDOR	2,65 M2
COVERED TERRACE 50%%	10,20 M2
TOTAL USABLE SURFACE	87,95 M2

